

**Combisafe Site Stairway**  
the safe temporary access solution

**COMBISAFE**<sup>®</sup>  
SAFETY BY SYSTEMS

# **Combisafe Site Stairway** the safe temporary access solution

## **Regulations and Standards**

There has been a general move within Regulations to promote safer and easier methods for temporary access between levels in construction. The need to carry small tools and materials to and from the workplace, and the benefit of forward facing movement, have encouraged the development of the Combisafe Site Stairway

The Combisafe Site Stairway has been designed and tested to meet the access performance requirements within the European Standard EN 12811 – Temporary Works Equipment - performance requirements and general design.

The angle of operation, loading requirements, tread dimensions, and minimum width are all taken into account in the system design. The performance requirements are met or exceeded in every case.

Full technical information is available within the user instructions and on the training courses.



## **Combisafe International**

As the leading developer of innovative safety solutions, Combisafe has introduced revolutionary new products to the construction industry over the past 20 years, specializing in customised and complex engineering solutions.

Its extensive range of products and components provide integrated system solutions for most building applications. The Combisafe Site Stairway is a safe temporary access solution.





## **Combisafe Site Stairway**

General construction best practice, and increasing regulations, support the move away from ladders as the means of temporary access between levels on construction sites. The Combisafe Site Stairway offers a simple, safe and practical solution.

The Stairways are quickly and easily installed on site, straight off the back of the transport, and are ready for use in minutes.

Set up at between 25° and 50° they are used facing forward, and users can carry small tools, equipment, and materials in safety and comfort.

They can be set up on table forms, in service ducts, around the perimeter, or elsewhere, frequently protecting the buildings stairs from the wear and tear of the construction process. They fully comply with EN 12811, as Temporary Work Equipment for access between levels on scaffolding.

# Features and Benefits

- The stairways come in six lengths, which can be joined and supported to offer a single run climb height of up to 7.5m.
- There is a double handrail on both sides, which automatically adjusts to the correct height.
- Whatever the angle of the stairway, the treads will always be horizontal.
- An automatic locking mechanism is designed to engage once the stairway is at the correct angle.
- A manual locking device is available in addition to the automatic locking mechanism. The manual lock is mounted in the pre-drilled holes on the opposite side to the automatic lock. This can be used during long-term or permanent stairway installation, or where the ground is loose or uneven.
- The Stairway is manufactured in steel section, and has a durable galvanized finish as standard, although a painted and lacquered alternative is available.
- The treads have a course expanded metal plate for grip, which also clears muddy footwear in use.



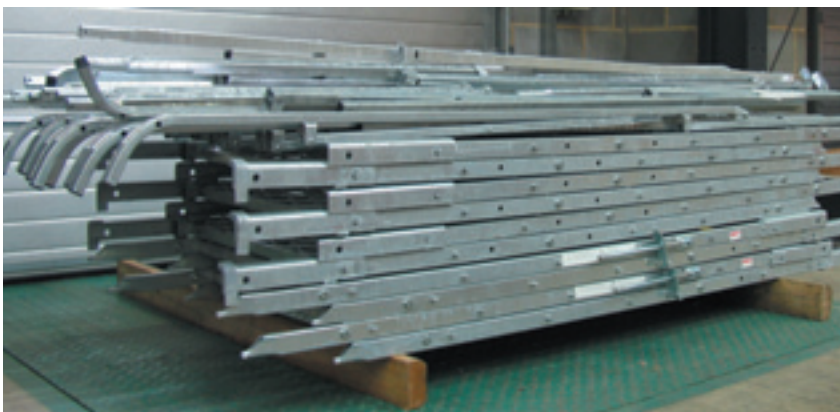
PRODUCT	ARTICLE NO.
Stairway 3 steps	CT1004
Stairway 6 steps	CT1003
Stairway 9 steps	CT1002
Stairway 12 steps	CT1001
Stairway 15 steps	CT1000
Stairway 18 steps	CT1018



CT1013

## Features and Benefits

- The bottom of the stringers have points to prevent slipping.
- The Stairway allows access for two persons at any one time.
- Being over 750mm wide, the Stairway permits occasional passing if required. For high passage rates the Stairways can be set up in pairs, each for one way traffic.
- The Stairways can be pre-joined to the required length before being sent to site, alternatively they can be site assembled.
- Units over 21 steps require a Combibeam for stiffness. Pre-fitting this before transport speeds up erection on site.
- The Stairways can be folded flat for ease of transport.
- The Stairways can be quickly and easily erected on site by two operatives. The handrails are simply secured in place, and the Stairway is then lifted into position using lifting equipment.



## Applications and Arrangements

This highly flexible temporary stairway offers a simple and effective access solution:

- Between levels on scaffolding
- Access to table platforms
- Access up batters and embankments
- Stairways can be used in lieu of permanent stairs
- Access into service ducts
- Access to temporary site offices and portacabins

PRODUCT	ARTICLE NO.
Universal Support	CT1023
COMBIBEAM	
Mid Lattice Beam (M6)	CT1016
End Lattice Beam (E12)	CT1015



### SIZE AND STABILITY

18-step and 21-step units require a bolt-on support. Units over 21 steps require a Combibeam, assembled from end modules and intermediate modules.

Other special sizes can be manufactured on request, for example, narrow stairs for system scaffolds or a specific number of steps for a frequent rise height and angle.

## INSTALLATION

Two operatives can easily install Stairways up to 9 steps. 12-step units and above will require lifting equipment.

The top is fixed to the upper level with one of a range of attachment devices to prevent movement in use, and the bottom of the stringers have points to prevent slipping.

All the Stairway units are cross-braced between stringers for increased stability; however, it is recommended that they are erected on a flat secure surface, or onto a sole plate if on soft ground.



## ATTACHMENTS

### Slab Attachment

The Slab Attachment is mounted on the stairway splice bracket to secure the stairway at the top. It is bolted to the concrete using an anchor or through the deck material.

### Scaffolding Attachment

The Scaffolding Attachment is designed to hook over standard scaffold tube, and to integrate with some system scaffolds. It can have a lock fitted, and should be used with some scaffolding fittings to prevent sliding sideways.

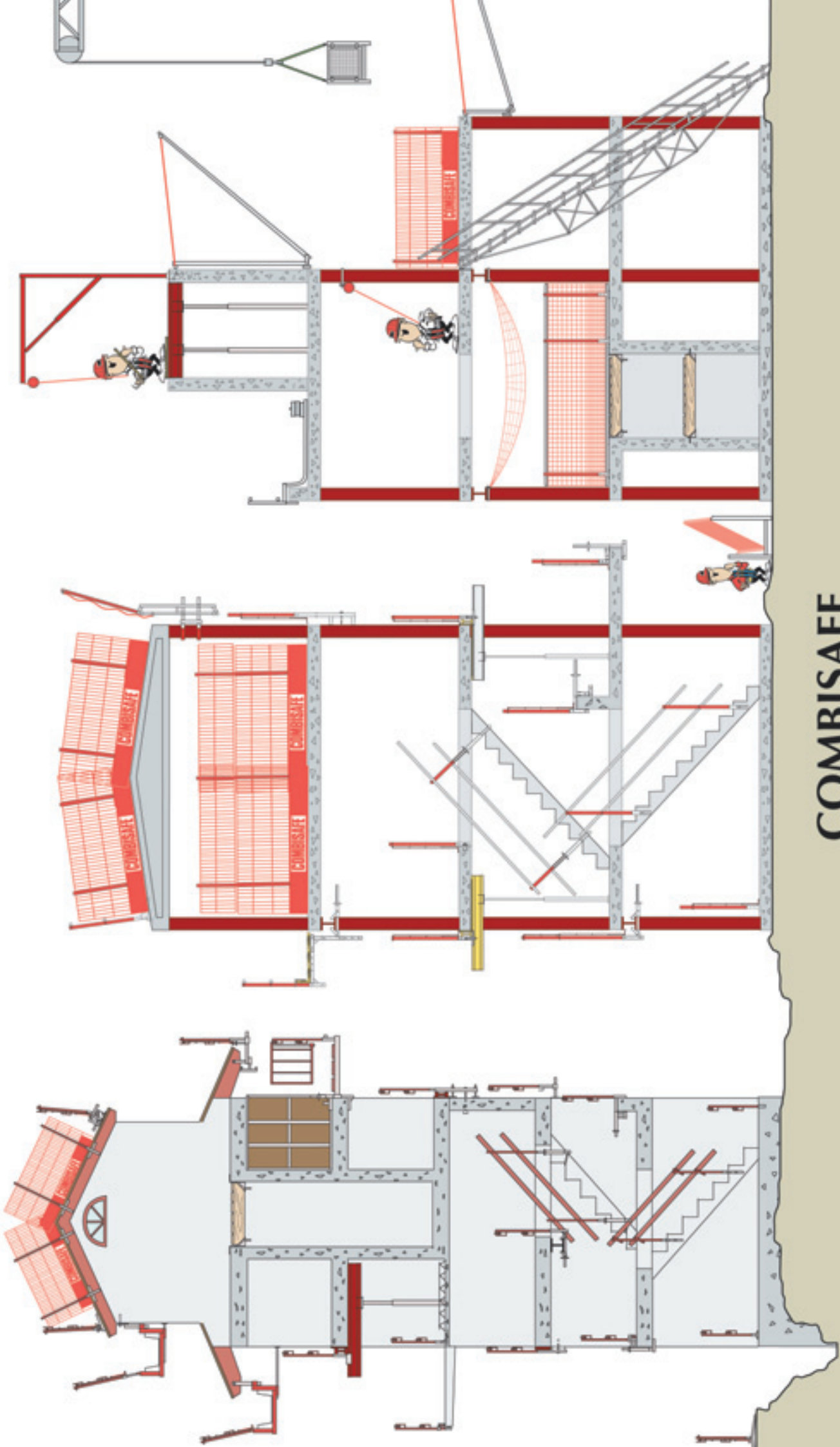


CT1021



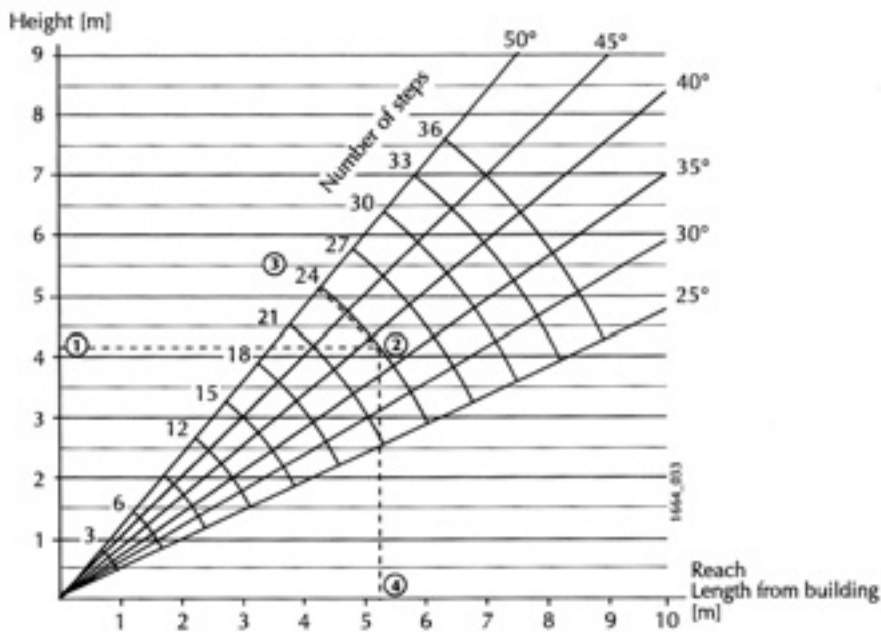
CT1017

PRODUCT	ARTICLE NO.
Slab Attachment	CT1017
Scaffold Attachment	CT1021
Manual Lock	CT1013



**COMBISAFE**  
Safety by Systems





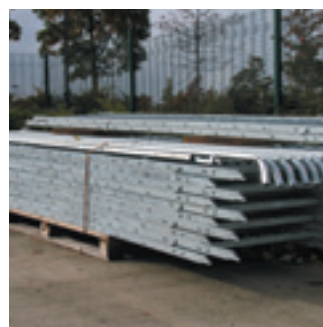
## Inclination Diagram

The inclination diagram shall be used for selecting the stairway length.

Recommended inclination range is 25-50°

The example in the diagram is shown with dotted lines and shall be interpreted as follows (example within brackets):

1. Start with the total rise height required (4.2 m).
2. Follow the rise height across into the fan of recommended inclination (38°).
3. Choose the number of steps based upon the inclination required (24 steps at 38°)
4. Follow downwards from the intersection - and read off how far out the base of the stairway will be (5.3m).



Article no.	Product	Stairway Length(m)	Weight(kg)
CT1004	Stairway 3 step	1.03	17
CT1003	Stairway 6 step	1.84	31
CT1002	Stairway 9 step	2.65	47
CT1001	Stairway 12 step	3.46	57
CT1000	Stairway 15 step	4.27	82
CT1018	Stairway 18 step	5.08	104



Combisafe International Ltd  
 Unit 1, Zone A, Cheaney Drive, Grange Park,  
 Northampton · NN4 5FB UK  
 Tel +44-01604-660600 Fax +44-01604-662960  
 email info@combisafe.co.uk www.combisafe.co.uk

**COMBISAFE®**  
**SAFETY BY SYSTEMS**

#### COMBISAFE INTERNATIONAL LTD

Unit 1, Zone A, Cheaney Drive,  
Grange Park, Northampton, NN4 5FB  
United Kingdom  
Tel: +44 (0)1604 660600  
Fax: +44 (0)1604 662960  
Email: info@combisafe.co.uk

#### COMBISAFE FRANCE

17 Square Edouard VII  
75 009 Paris  
France  
Tel: +33 (0)153 43 91 90  
Fax: +33 (0)153 43 91 01  
Email: info@combisafe.co.uk

#### COMBISAFE INTERNATIONAL AB

Ostersund Office  
Storsjöstråket 15  
831 34 Östersund  
  
Stockholm Office  
Kung Hans Väg 8  
192 68 Sollentuna  
Sweden  
Tel: +46 (0)63 150260  
Fax: +46 (0)63 129330  
Email: info@combisafe.se

#### COMBISAFE ESPAÑA

Avenida Maisonnave 41 6-F  
03003 Alicante  
Spain  
Tel: +34 (0)965 926028  
Fax: +34 (0)965 121750  
Email: info@combisafe.co.uk

#### COMBISAFE DEUTSCHLAND GmbH

Gehringstraße 51  
13088 Berlin  
Germany  
Tel: +49 (0)30 5573080  
Fax: +49 (0)30 55730823  
Email: info@combisafe.de

#### COMBISAFE NORGE AS

Nydalsveien 33  
PB 4814 Nydalen  
0422 Oslo  
Norway  
Tel: +47 (0)21 520069  
Fax: +47 (0)21 520010  
Email: info@combisafe.se

#### COMBISAFE DANMARK ApS

Sluseholmen 2-4  
2450 Kopenhamn SV  
Denmark  
Tel: +45 (0)36 944990  
Fax: +45 (0)36 944510  
Email: info@combisafe.se

#### COMBISAFE GULF L.L.C

c/o Safegate Gulf L.L.C  
4th Floor,  
Khalid Al Attar Building  
Sheikh Zaid Road  
PO Box 29596  
Dubai  
Tel: +971 (0)4 3323013  
Fax: +971 (0)4 3323022  
Email: info@combisafe.co.uk

**COMBISAFE®**  
**SAFETY BY SYSTEMS**